



ETMAN INTERNATIONAL NEWSLETTER

THE SPARK

USB
MODULES

P.4

NEW
PRODUCTS

P.6

GROUP
UPDATES

P.16

WELCOME 2024

A WORD FROM OUR CEO

Welcome to 2024, the Year of the Dragon—a symbol of prosperity and fortune. I'm proud to share Etman's strides toward another prosperous year ahead.

We're stepping into the new year with 'The Spark,' our new quarterly newsletter, offering insights into Etman's dynamic world. It's a window into our initiatives, products, and the dedicated people shaping our success.

Despite a few market challenges in the past year, Etman has grown stronger, boasting a wider customer base and increased market share. This achievement reflects our team's resilience, spirit and collective efforts. Our presence in Norway, Sweden, and Finland is continually improving, as we effectively engage and retain customers, thanks to our team's unwavering dedication and our customers' trust in Etman.

Our Lithuanian operations are thriving with advancements in prewired pipe production, and there are already plans for further service expansion, like central warehouse solutions. Strategic moves enhance our market responsiveness and operational efficiency.

We're witnessing a rise in ODM/OEM partnerships, highlighting our growing global influence. Our expansion across continents and into diverse markets enriches our product offerings, providing our customers with a wider, innovative range and leveraging global insights for the best in efficiency and technology.

The collaboration between our team in China and our product managers, especially in developing products like our USB series, positions us at the forefront of technological progress. Our production teams' precision ensures top-tier quality in what we offer.

Looking ahead, our goal is to bolster efficiency and foster stronger global teamwork, ensuring exceptional service and products. Your support is vital in this journey.

TOGETHER, WE CREATE A BETTER FUTURE!



JAN TORE SKÅRLAND
CEO, ETMAN INTERNATIONAL ASA

**USB
sockets
& modules**

P.6

**Lighting &
sockets**

P.4

P.10

Cables

P.12

**Case
studies**

**Boxes,
pipes &
accessories**

P.14

**Group
news**

P.16



USB CHARGING

WALL MOUNTED

Adapter plugs are a thing of the past with our USB sockets

IN THE BUSTLING WORLD OF TECHNOLOGY, OUR WALL-MOUNTED USB SOCKET RANGE EMERGES AS A BEACON OF CONVENIENCE AND SAFETY. CERTIFIED BY CE, S MARK, INTERTEK, AND TUV, THIS INNOVATIVE RANGE BOASTS RELIABILITY AND QUALITY.

This TUV and CE-certified EN62368-1 USB socket offers up to 36W charging capabilities. Customisable for various plug types, it's now available for order.

Catering to diverse needs, the range offers various options: a single C port, a double C port, a combination of C and A ports, and regular sockets with inbuilt USB C and A connections. This versatility makes it a perfect fit for any setting, be it a cosy home or a dynamic office environment.

Imagine a world where the constant hunt for adapters becomes a thing of the past. This USB range makes this a reality. With its user-friendly design, charging your devices becomes effortlessly efficient. Whether it's your smartphone, tablet, or laptop, these sockets ensure that your gadgets are always powered up and ready to go.

Our USB socket range is not just a product - it's a lifestyle upgrade, epitomising the fusion of technology and everyday convenience.



AVAILABLE WALL MOUNTED USB SOCKETS:

READY
for order



TUV & CE approved
18W, 30W, 45W, 65W
Independent charging point

MADE
to order



This type of socket can be customised
We can make it with up to 65W charging power

MADE
to order



This type of socket can be customised
We can make it with up to 65W charging power

READY
for order



S Mark, CE certified, EMC Mark, approved by Intertek
Can be made with up to 65W

READY
for order



Ready for ordering from April 2024

USB CHARGING

MODULES

Enhance your products with our USB charging modules

Our versatile USB charging modules redefine convenience, designed to integrate seamlessly into various products like furniture, trunking systems, vehicles, and lighting items. Offering comprehensive OEM/ODM services, we collaborate with businesses of all sizes to innovate products enhanced with USB charging functionalities. Not just customisable, these modules boast impressive 65W and 100W fast charging capabilities, ensuring quick and efficient power delivery for a wide array of devices.

applications



FURNITURE



TRUNKING AND OFFICE SPACES

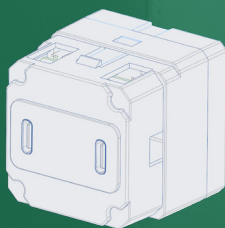


LIGHTING



CARS AND TRAINS

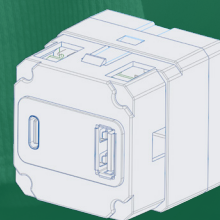
AVAILABLE CUSTOMISABLE USB MODULES:



Ready for customisation
The module size is 45x45x41mm
Charging power 65W



Ready for customisation
The module size is 75x50x42.5mm
Charging power 100W



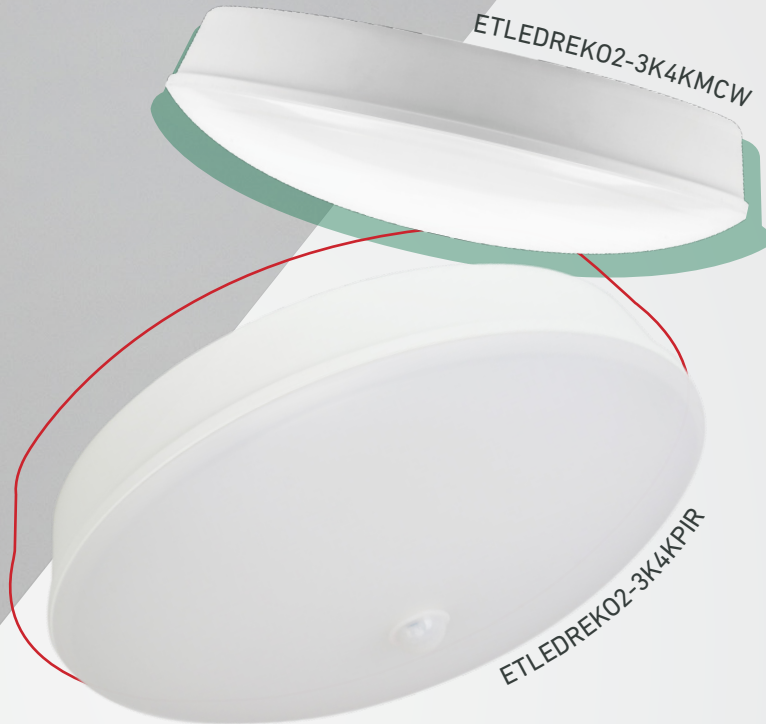
Ready for customisation
The module size is 45x45x41mm
Charging power 65W

REKO

CEILING LIGHTS

The Reko light series stands out with its versatile wiring options, accommodating both surface-mounted and concealed ceiling box installations. It offers multiple colour temperatures to suit different environments and preferences. It also features DALI 2.0 for smooth dimming control allowing customers to adjust the lighting to their liking.

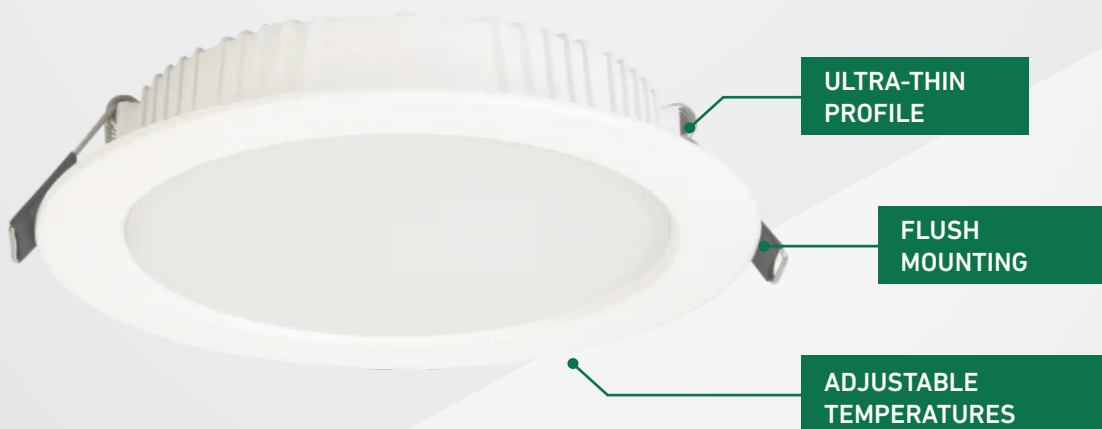
A single Reko can light up **areas of up to 15 m²**. That's what we call a broad illumination range!



ETLED ROUND

DOWNLIGHTS

The Etled Round, a sleek LED downlight crafted for the Finnish market was unveiled last year. These stylish round panels are designed for flush mounting, featuring adjustable colour temperatures of 3000K and 4000K. With TRIAC dimming and an ultra-thin profile, they are perfectly suited for installations in areas with limited ceiling height, offering versatility to match various customer preferences for colour temperature.



ETLED MINI AND HIDDEN

DOWNLIGHTS FOR INDOORS & OUTDOORS

We have responded to the trend towards minimalist lighting by introducing the Etled range, featuring the compact Etled Mini, the sleek Etled Hidden, and their accessories. With their stylish design and straightforward installation, they are notably suited for damp environments. The Etled Mini boasts an IP64 rating, offering exceptional dust protection and resilience against low-pressure water jets, ideal for bathrooms and outdoor areas. Meanwhile, the Etled Hidden carries an IP44 rating, ensuring it is splashproof and versatile for various environments.



OUTDOOR

WEATHER-PROOF SOCKETS

Over the last 12 months, we have upgraded its outdoor double gang sockets with V5 inserts, ensuring each one meets the 4N single-pin withdrawal force standard and complies with RoHS, REACH, and WEEE regulations for maximum security. Additionally, we have expanded our range to include a lockable range for enhanced protection.

If you regularly use electrical equipment outdoors, such as a lawnmower or hedge trimmer, these external power points will make life easier and safer.



POWER CABINET

SPACE SAVING SOCKET

We have also introduced a space-saving power cabinet socket, designed for streamlined integration with two horizontal and two vertical outlets, simplifying installation while optimising cabinet space.

FEATURING
TWO HORIZONTAL AND
TWO VERTICAL OUTLETS
FOR SPACE OPTIMISATION.



DESIGN X

UPGRADE SOCKET COLOUR WITH EASE

The DesignX range was expanded with black and white cover frames for sockets and switches. The 5-gang frame is an elegant solution for modern electrical setups. Available in classic black and white, these frames offer a sleek and streamlined look, making them a perfect choice for contemporary interiors.

They are designed to house multiple switches and connections within a single frame, providing a neat and organised appearance. This feature is particularly advantageous for spaces requiring numerous electrical points, as it minimises clutter and enhances the room's aesthetic appeal.

The easy-to-upgrade design allows for quick and simple replacements or additions, ensuring the electrical setup remains both functional and stylish over time.



POWER UP YOUR PRODUCTS

OEM/ODM CASE STUDY

Refresh and recharge: a bottle with a tech twist

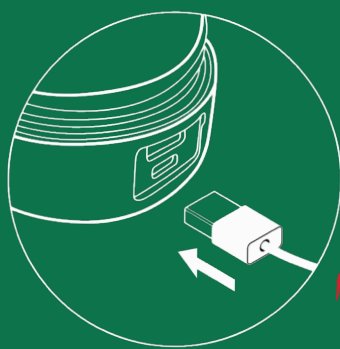
In an innovative partnership, we've teamed up with a well-known tech accessory brand, to create a bottle that redefines the concept of hydration.

This isn't just a water bottle - it's a practical gem designed to keep you and your devices energised on the go. At its core is a USB and wireless charging power bank, seamlessly integrated into the bottle's base.

The power bank, with a substantial 5,700 mAh battery capacity, guarantees up to two full phone charges. Crafted for durability and functionality, it features IP66 water and dust resistance. Additionally, intuitive LED lights provide a clear indication of charging status, blending high-tech with high functionality in a sleek, modern design.



IF YOU HAVE A PRODUCT IDEA OR DESIGN
THAT NEEDS RELIABLE PARTNERS
TO ENGINEER IT, THEN FEEL FREE TO
CONTACT US AND WE'LL HAPPILY DISCUSS
YOUR PROJECT.



The power bank boasts 5W Qi wireless charging technology. It is compatible with iPhone, Android, Huawei and other popular devices.

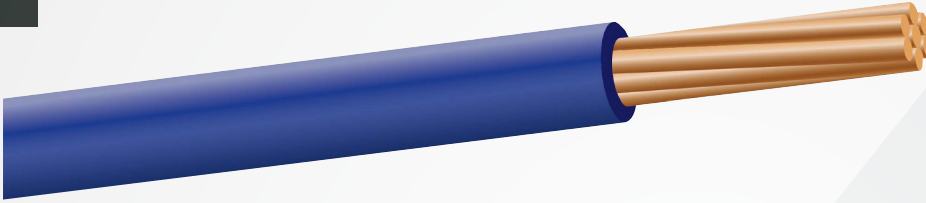


It offers safe on-the-go charging thanks to the innovative technology and the following certifications Qi, FCC-ID, CEC(BC), IP66, RoHs, Prop65, UN38.3.

H07Z1-R

STANDARD EN 50525-3-31

We have brought out the H07Z1-R cable, embracing environmental responsibility with LSHF material, making it ideal for public spaces like schools and hospitals. It boasts a DCA-level fireproof rating for enhanced safety and features rigid stranded conductors, aligning with the regulations of most countries.



The following colours are available:
Blue, Black, Green/ Yellow, Brown, White, Grey, Orange

CONDUCTOR

Rigid stranded copper, round, EN60228 class 2

INSULATION

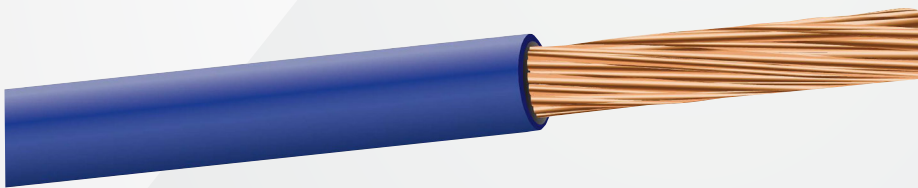
FR-PEX
LSZH (IEC 61034, IEC 60754-2)

CERTIFIED BY: CE AND SEMKO

H07Z1-K

STANDARD EN 50525-3-31

The H07Z1-K cable was launched, featuring low-smoke, halogen-free (LSHF) material, ideal for environmentally conscious public and commercial settings. With a DCA-level fireproof rating, it ensures enhanced safety. The cable's soft conductors offer flexibility for various device wirings, making handling easier.



The following colours are available:
Blue, Black, Green/ Yellow, Brown, White, Grey, Orange

CONDUCTOR

Stranded flexible copper, EN60228 class 2

INSULATION

FR-PEX
LSZH (IEC 61034, IEC 60754-2)
Extra sliding low smoke zero halogen (LSZH) polyolefin insulation

CERTIFIED BY: CE

CONDUIT END PIECES

ENSURING CONDUITS STAY CLEAN AND SAFE

Expanding our conduit offer, we now manufacture and sell 25mm thick conduit end pieces, each 150mm in length and customisable to desired sizes. These end pieces effectively shield conduits from dirt, concrete, and foreign particles, making them essential for protecting plastic piping ends in concrete casting, whether in element factories or on-site castings.

CONDUIT END PIECES OFFER THE FOLLOWING BENEFITS:

- safeguarding wires from external damage
- they provide a neat, finished look to the installation
- using end pieces can help meet safety codes and standards
- made from materials resistant to corrosion, they increase the lifespan of the system

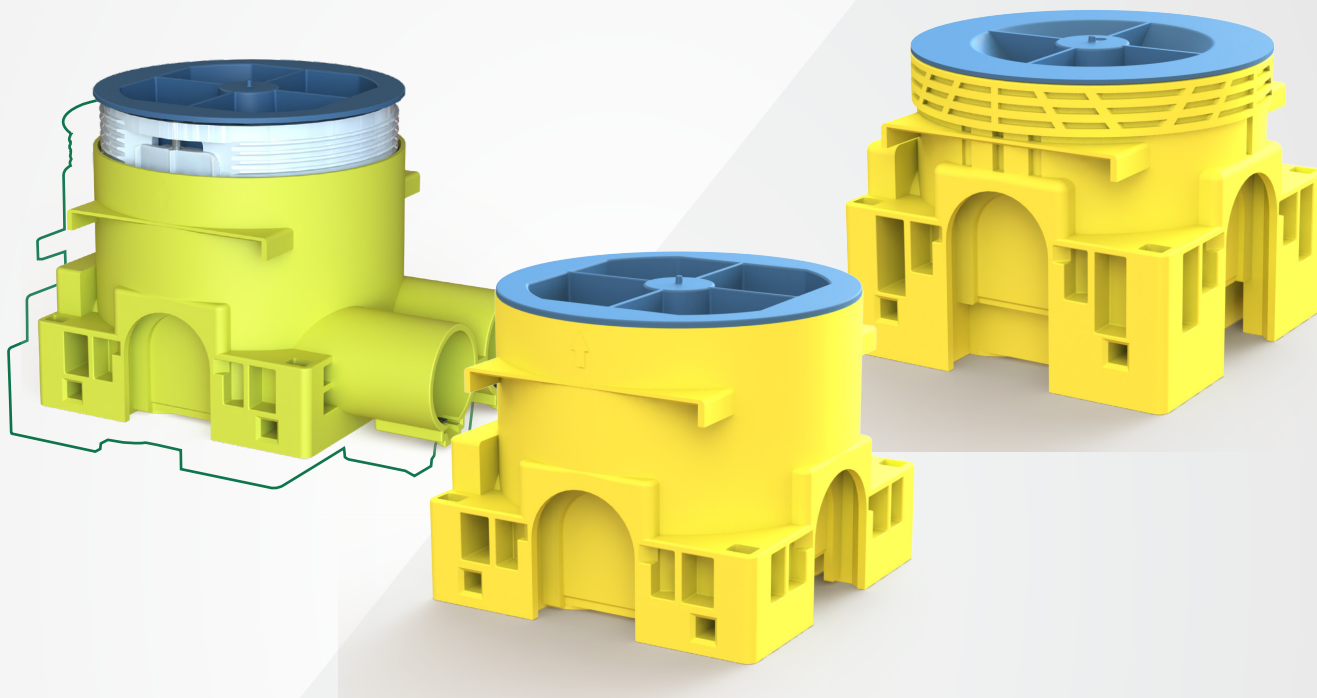


CONCRETE BOXES

FOR A FLUSH INSTALLATION

We have introduced three additional lime boxes tailored for electrical installations in concrete. Some of them were specifically designed for the Finnish market, but each with unique features.

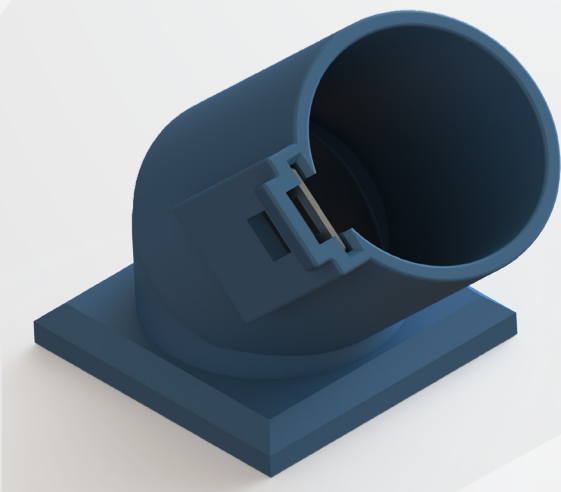
The H58 concealed box offers ample internal space for taller electronic products and modular accommodation. A rotating fixing ring ensures adaptability for 12/24 plasterboard environments, while a dedicated box, also in 58mm height, includes an inlet and two Ø20 connectors, making it compatible with conduit pipes. This innovative range was designed to meet diverse installation needs.



BUSHING INSULATOR

ANGLED INSULATOR

Our newly released angled 20mm bushing insulator facilitates seamless pipe connections, fulfilling the need for bending pipes or cable routing, thus enhancing versatility in various installation scenarios.

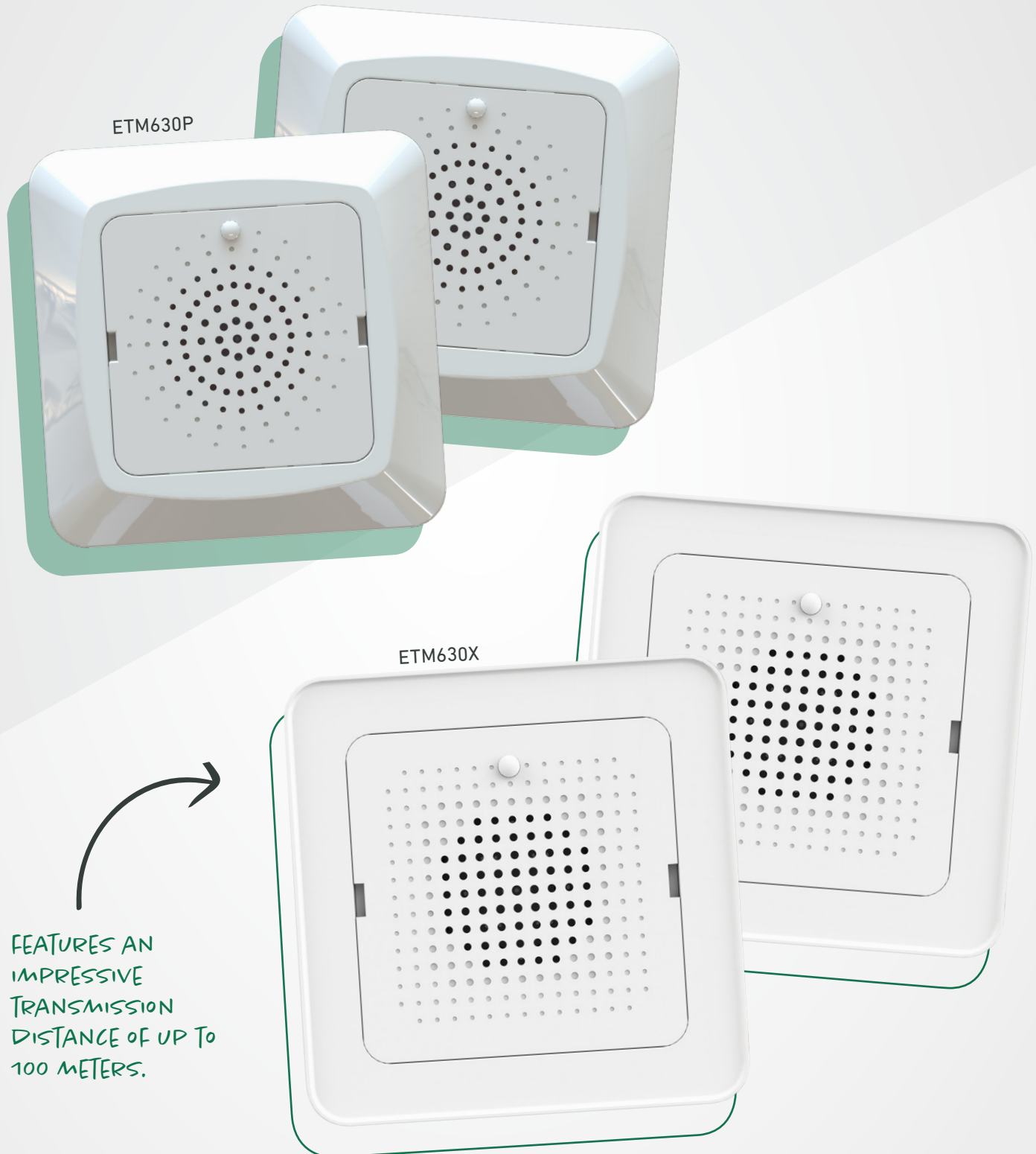


IRREPLACEABLE
PART FOR CABLE
ROUTING!

DOORBELLS

STYLE MEETS FUNCTIONALITY

The accessories range has seen two new additions: 230V doorbells, one raised and one low profile, both engineered for enhanced safety. They can connect to both high-voltage and low-voltage pushes, isolating power sources to separate high and low-voltage wiring for enhanced safety. Featuring automotive-grade speakers, these doorbells deliver superior sound quality and audio performance, with a remarkable transmission distance of up to 100 meters.



DIGITAL TRANSFORMATION

Etman Norway marks the festive season with a new website

To celebrate the start of the festive season, Etman Norway marked a significant milestone by launching a new e-commerce website. This digital expansion allows the group to extend its comprehensive product range beyond professional installers, reaching homeowners directly.

“Espen Nordby, the Marketing Manager of Etman Norway, highlights the strategic move: “Our new website is a game-changer, significantly enhancing Etman’s reach across Norway. We’re not just providing easier access to our products but also ensuring quality and safety by offering expert installer services with each purchase.”

“This initiative is all about bringing convenience and reliability into our customers’ homes, saving them time and enriching their experience with our brand.”

To visit the new website, please visit etman.no.



SCAN ME TO
VISIT ETMAN.NO



GLOBAL EVENTS

Etman International will showcase its products in Poland

A renowned name in the electronics industry Etman International is set to exhibit at the prestigious Electricity exhibition in Poland at the end of January 2024.

This international event takes place in Warsaw and is a significant platform for companies to showcase their innovative products and services. Etman International will be prominently located in hall 3, at the B15 stand, where it will display a range of its latest electronic items.

The exhibition presents a unique opportunity for Etman International to engage with potential clients, establish new business networks, and exhibit its array of products and services. Highlights include their advanced USB modules, various sockets and plugs, corrugated pipes and especially its OEM and ODM services.

“Saulius Uznys, the Managing Director of Etman Lithuania, said: “The Electricity exhibition is an excellent opportunity for us to demonstrate our leading-edge products and connect with industry peers and potential clients. Our participation underscores our dedication to being at the forefront of electronic solutions and our commitment to sustainability and innovation.”

This event marks a significant step for Etman International in reinforcing its position as a key player in the global electronics market. For more information about the event, please visit <https://elektroinstalacje.pl/>.



SCAN ME TO
FIND OUT MORE
ABOUT THE EVENT

GLOBAL EVENTS



Another international exhibition in the pipeline for Etman

Etman International is set to join industry-leading lighting and electrical engineering manufacturers at the Light + Building 2024 exhibition in Frankfurt, Germany.

Scheduled for 3-8th March, this event presents a global platform for the company to boost its presence and gain new partnerships. This will be the second international exhibition the company will be taking part in.

Known for its high-quality products ranging from fast-charging USB modules and LED lights to corrugated pipes, sockets and plugs, Etman has been a familiar name among professionals and DIY enthusiasts in Scandinavia.

The company, boasting three decades of expertise in the electrical industry, plans to showcase not only its products but also its comprehensive range of services, including OEM and ODM solutions.

66

Jurgita Krisciuniene, Business Development Officer at Glob-el, Etman's sister company leading the OEM and ODM services, said: "We're excited to promote our innovative products and services at Light + Building 2024. It's a fantastic opportunity to stay in tune with the latest industry trends, network with fellow exhibitors, and forge valuable connections in the industry."

99

Light + Building, an event held biennially, serves as an international hub for manufacturers in the lighting, electrical engineering, home and building automation, and connected security technology sectors.

Etman will be located in hall 12, stand E29 and everyone's welcome to pop by and say hello.

For further details about the event, visit Light + Building's official website <https://light-building.messefrankfurt.com/>.

COME AND VISIT
US BETWEEN 3-8TH
MARCH AT THE
MESSE FRANKFURT



ETMAN NORWAY
Etman Distribution AS
W: etman.no

ETMAN SWEDEN
Etman Distribution AB
W: etman.se

ETMAN FINLAND
Etman Distribution Oy
W: etman.fi

ETMAN CHINA
Etman Electric Co. Ltd.
W: etman.cn

ETMAN LITHUANIA
Etman UAB
W: egant.eu

E: info@etmaninternational.com